

# FEMALE ACADEMIC UNIFORMS



**BURGUNDY S/S**

**\$25-\$28**

\*Price Varies by size



**LIGHT YELLOW S/S**

**\$25-\$28**

\*Price Varies by size



**RED S/S**

**\$25-\$28**

\*Price Varies by size

**Scholar's may wear long sleeves in the respective colors during the winter months**



**KHAKI STRETCH TAB  
DOUBLE PLEATED SCOOTER**

**\$ 25.00**



**KHAKI SHORTS**

No Cargos, must be uniform material



**KHAKI PANTS**

No cargos or jeggings

# OUTERWEAR



**BLAZER**

**\$92 - \$105**



**WARM UP SET**

**\$85.00**

# MALE ACADEMIC UNIFORMS



**BURGUNDY S/S**

**\$25-\$28**

\*Price Varies by size



**ORANGE S/S**

**\$25-\$28**

\*Price Varies by size



**RED S/S**

**\$25-\$28**

\*Price Varies by size

**Scholar's may wear long sleeves in the respective colors during the winter months**



**KHAKI SHORTS**

No Cargos, must be uniform material



**KHAKI PANTS**

No cargos

# OUTERWEAR



**BLAZER**  
**\$92 - \$105**



**WARM UP SET**  
**\$85.00**

# FEMALE PERFORMING ARTS UNIFORMS



## BURGUNDY LEOTARD SET

Grades 9-12

**\$70.00**



## BLACK CAMISOLE LEOTARD

Grades K-12

**\$30 - \$35**



## SKIN COLORED CONVERTIBLE TIGHTS

**\$15.00**



## BLACK STIRRUP TIGHTS

**\$15.00**



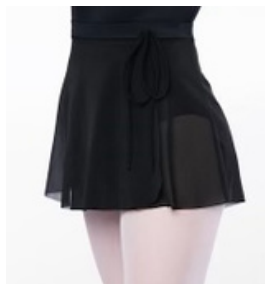
## BLACK BIKER SHORT

**\$25 - \$27**



## BROWN BIKER SHORT

**\$25 - \$27**



## BALLET SKIRT

**\$25.00**



## BLACK LEGGINGS W/ LOGO

**\$45.00**



## TAN CANVAS JAZZ SHOE

**\$50.00**



## PINK CANVAS BALLET SHOE

**\$35.00**

# MALE PERFORMING ARTS UNIFORMS



**BURGUNDY SLEEVELESS  
COMPRESSION TANK**

Grades 9-12

**\$20.00**



**BURGUNDY S/S  
COMPRESSION SHIRT**

Grades 9-12

**\$20.00**



**BLACK S/S  
COMPRESSION SHIRT**

Grades K-12

**\$20.00**



**BLACK ATHLETIC SHORTS**

**\$20.00**



**BLACK COMPRESSION  
TIGHTS**

**\$20.00**



**BLACK ATHLETIC JOGGERS**

**\$35.00**



**BURGUNDY/ BLACK  
ATHLETIC JOGGERS**

**\$35.00**



**BLACK CANVAS BALLET SHOE**

**\$35.00**



**BLACK LEATHER JAZZ SHOE**

**\$50.00**

## Academic Uniforms

	Female Scholars	Male Scholars
Polos	Short Sleeve Red, Burgundy, Light Yellow w/ school Logo Long Sleeve Polo: Red, Burgundy w/ school logo	Short Sleeve Polo: Red, Burgundy, Orange w/ school Logo Long Sleeve Polo: Red, Burgundy w/ school logo
Bottoms	Khaki Stretch Double Pleated Scooter Khaki Shorts (no cargos, must be uniform material) Khaki Pants (no jeggings, must reach below ankles)	Khaki Shorts (no cargos, must be uniform material, no shorter than directly above knee cap) Khaki Pants (no cargos, must reach below ankles )
Accessories	Belt *Must be worn with pants and shorts	Black Belt *Must be worn with pants and shorts
Outerwear	Blazer w/ Logo Warm up Set	Blazer w/ Logo Warm up Set

### Footwear

Scholars should have comfortable closed toe shoes that are conducive for physical activity (no heels, sandals, slides, cleats, e.t.. Scholars also have complete creative freedom with their choice of socks.

## Performing Arts Uniforms

	Female scholars	Male Scholars
	<ul style="list-style-type: none"> <li>• Tangerine Wide Strap Camisole Leotard</li> <li>• Faux Wrapped Black Ballet Skirt</li> <li>• Skin colored convertible tights (2)</li> <li>• Black Stirrup Tights (2)</li> <li>• Brown Biker Shorts (1)</li> <li>• Black Biker shorts (1)</li> <li>• Plain Black Leggings w/ school logo (1)</li> </ul>	<ul style="list-style-type: none"> <li>• Orange Short Sleeve Compression Shirt</li> <li>• Orange sleeveless compression shirt</li> <li>• Black Compression Muscle Tank</li> <li>• Plain Black athletic joggers</li> <li>• Plain black athletic shorts</li> <li>• Plain Black <math>\frac{3}{4}</math> compression tights</li> <li>• Plain Black ankle/mid-crew socks</li> </ul>
Footwear	Pink Canvas Split Sole Cross-strapped ballet slippers Tan canvas split sole Jazz shoes	Black Canvas Split Sole Cross-strapped ballet slippers Black Leather Split Sole Jazz shoes

## Performing Arts Uniform Schedule

	Female Scholars	Male Scholars
Mondays & Wednesdays	<ul style="list-style-type: none"> <li>• Grade Level Colored Leotard</li> <li>• Skin Colored Convertible Tights</li> <li>• Black faux wrap skirt</li> <li>• Brown Biker Shorts</li> <li>• Ballet &amp; Jazz shoes</li> </ul>	<ul style="list-style-type: none"> <li>• Grade Level Colored short sleeve Compression Shirt</li> <li>• Plain Black Joggers</li> <li>• Ballet &amp; Jazz shoes</li> <li>• Black ankle or crew socks</li> </ul>
Tuesday & Thursdays	<ul style="list-style-type: none"> <li>• Grade Level Colored Leotard</li> <li>• Black Stirrups</li> <li>• Black Biker Shorts</li> <li>• Ballet &amp; Jazz shoes</li> </ul>	<ul style="list-style-type: none"> <li>• Grade Level Colored sleeveless Compression Shirt</li> <li>• Black athletic shorts</li> <li>• Black <math>\frac{3}{4}</math> compression tights</li> <li>• Ballet &amp; Jazz shoes</li> <li>• Black ankle or crew socks</li> </ul>
Fridays	<ul style="list-style-type: none"> <li>• Black Leotard</li> <li>• Black Leggings</li> <li>• Ballet &amp; Jazz Shoes</li> </ul>	<ul style="list-style-type: none"> <li>• Black compression shirt</li> <li>• Plain Black Joggers or burgundy joggers</li> <li>• Ballet &amp; Jazz Shoes</li> <li>• Black ankle/Crew Socks</li> </ul>